

Wireless @ Johns Hopkins

Wireless Configuration Guide:

Apple Macintosh OS X 10.4.X "TIGER"

NOTE: The “hopkins” network requires Macintosh OS version 10.4.x or higher. Instructions for Mac OSX 10.5.x, “Leopard,” are slightly different.

Additional Hopkins Wireless Network Instructions and Requirements for Mac OS X Leopard, Windows Vista and Windows XP can be found at:

<http://www.it.jhu.edu/networking/wireless/>

The Johns Hopkins Institutions offer the “hopkins” wireless network to faculty, staff, students, or anyone with a valid JHED ID. The “hopkins” wireless network uses strong 256 bit Advanced Encryption Standard (AES), and Microsoft Internet Authentication Service (IAS) for authentication to provide a higher level of security and access. A program named Cisco Clean Access Agent will be resident to accommodate a behind the scenes handshake.

****NOTE: The Clean Access Agent requirement has been temporarily disabled.**

How do I find out my JHED account information?

The following steps will allow you to activate your JHED ID. You will need access to a wired (ethernet) connection.

Step 1: Open a web browser and go to <http://my.johnshopkins.edu>.

Step 2: Click the **First Time Logon** tab.

Step 3: Follow the instructions on the login page to find out your Login ID and to set your password.

Step 4: Click on **Change My Info** tab and fill in a valid email address. Click **Save**.

JHED account and Active Directory credentials should be the same except for some grandfathered accounts. If you have issues with signing in when asked for your User ID and password, please contact the Help Desk, (410) 955-HELP, to correct the issue.

Wireless @ Johns Hopkins

How to configure for “hopkins” Macintosh OS X 10.4.x:

Step 1: Go to the **Airport** menu and choose **Open Internet Connect**.

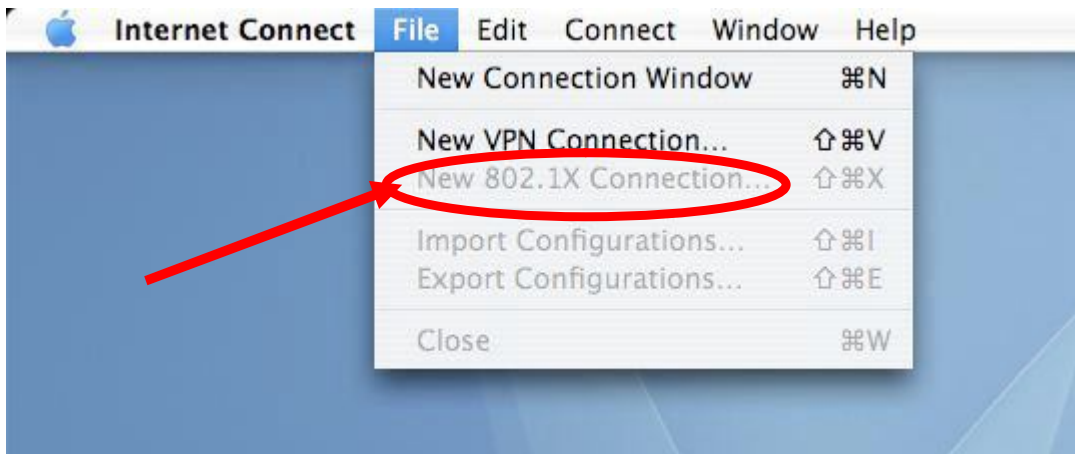


Step 2: In **Internet Connect** select the **802.1X** icon.

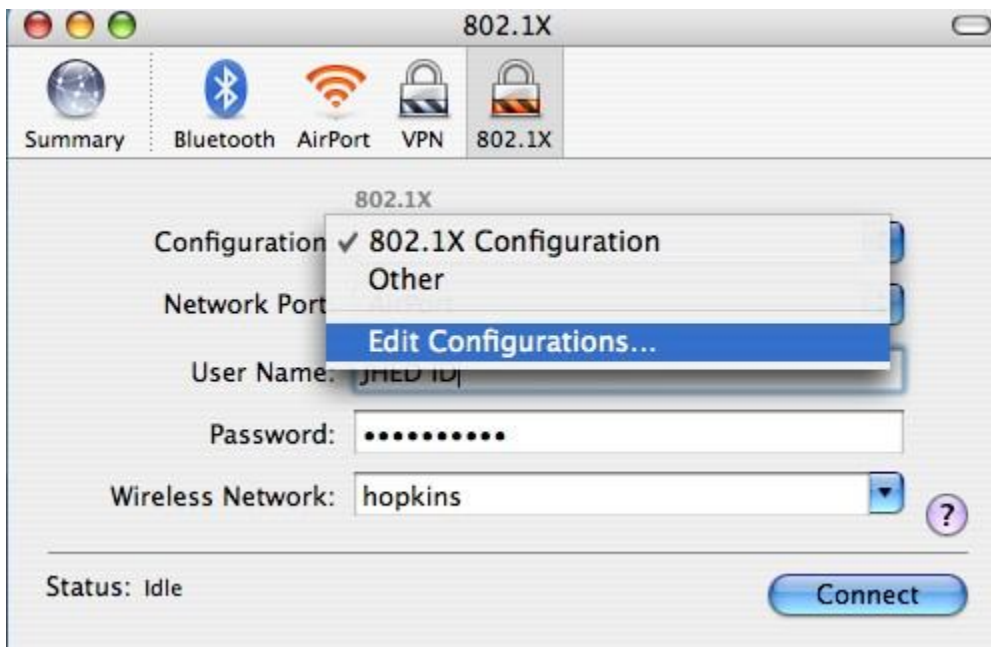


Wireless @ Johns Hopkins

NOTE: If you do not see an 802.1X icon, go to the **File** Menu and choose **New 802.1X Connection**.

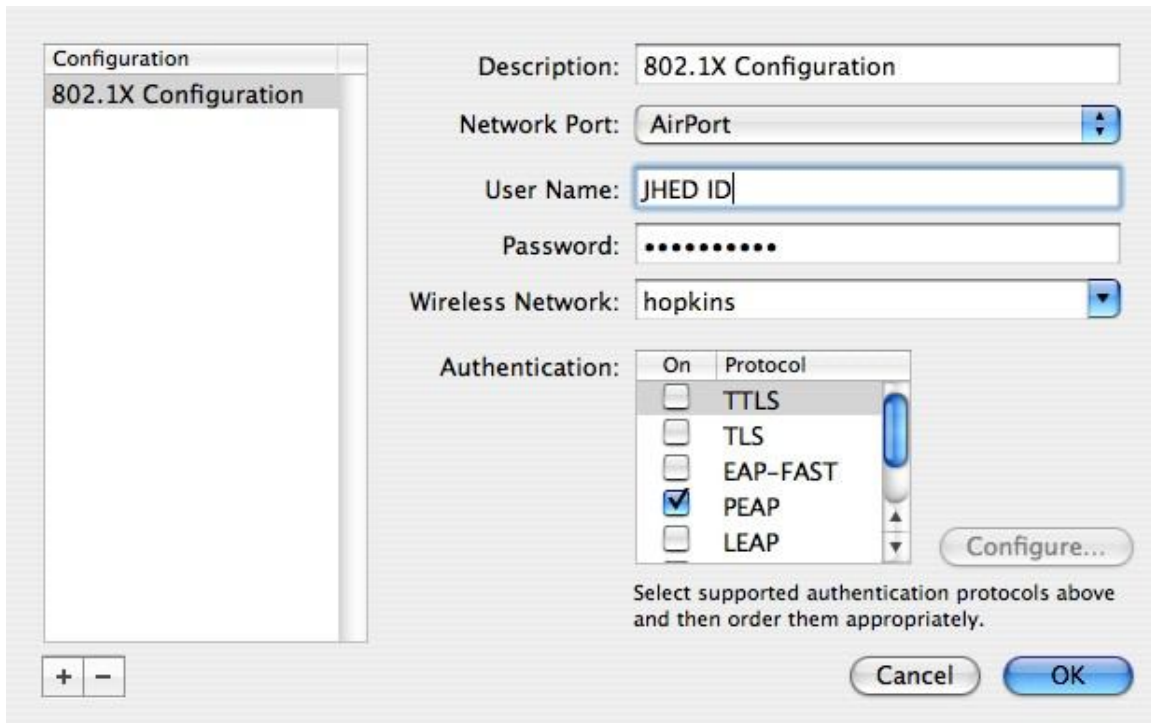


Step 3: Choose **Edit Configurations**, from the **Configuration** dropdown box.

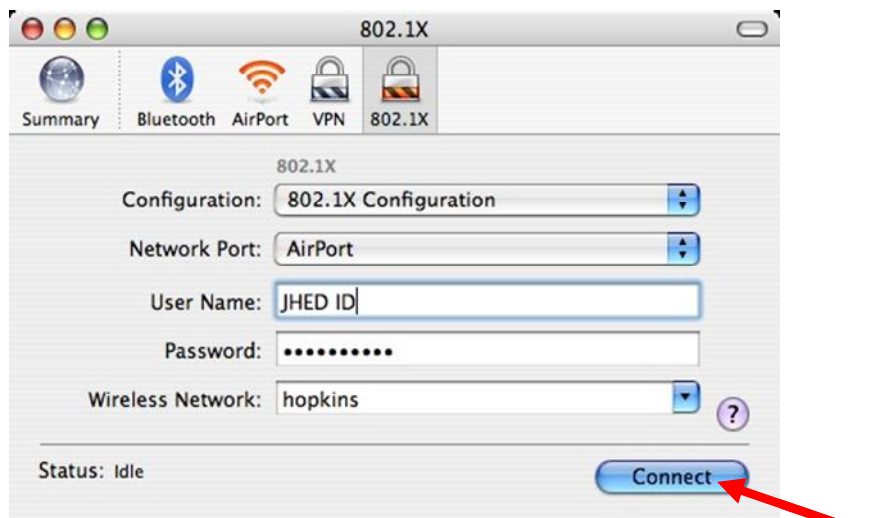


Wireless @ Johns Hopkins

Step 4: You can leave the **Description** as **802.1X**. Make sure **Network Port** is set as **Airport**. Type your **JHED ID** and **Password**. In the **Wireless Network** field, type **hopkins**. For **Authentication**, make sure ONLY **PEAP** is checked. Click **OK** to save changes.



Step 5: Connect to the “hopkins” network by clicking the **Connect** button. You will be prompted to accept our certificate.

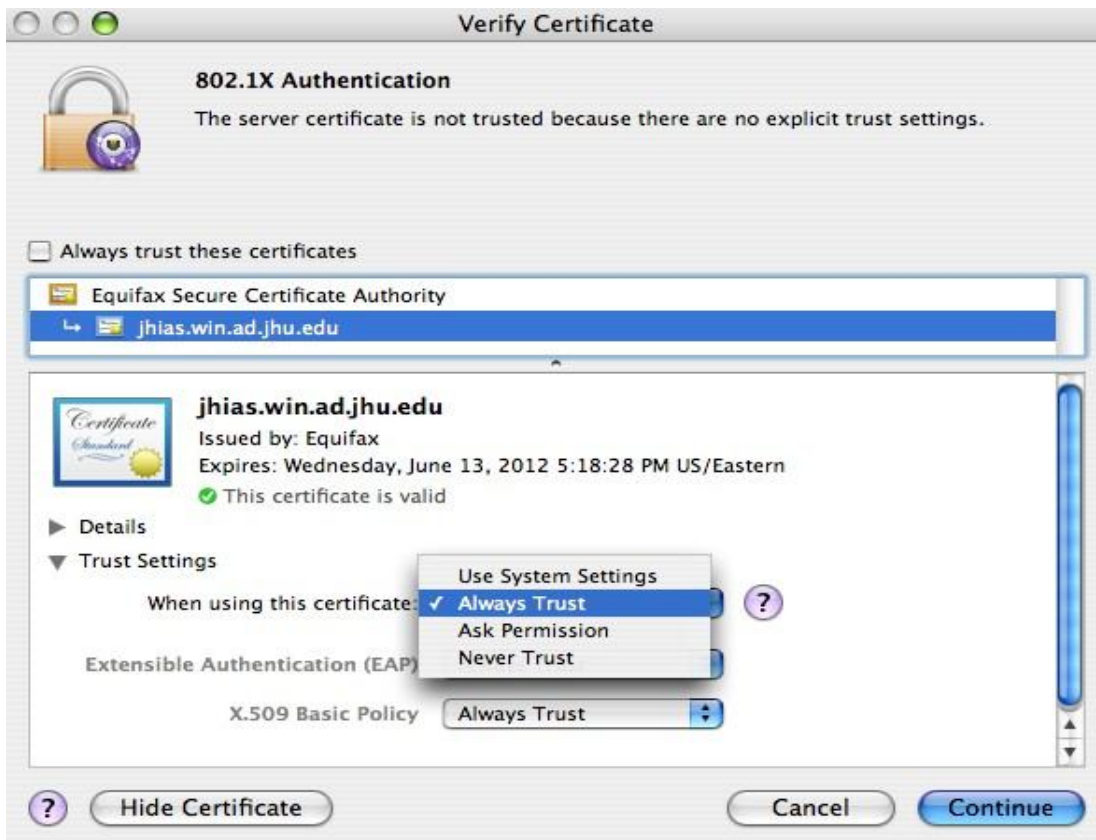


Wireless @ Johns Hopkins

Step 6: You must trust this certificate. Click on **Show Certificate**.



Step 7: Click on the arrow beside the certificate **Trust Settings** to expand the option. When using this certificate select **Always Trust**. Click **Continue**.



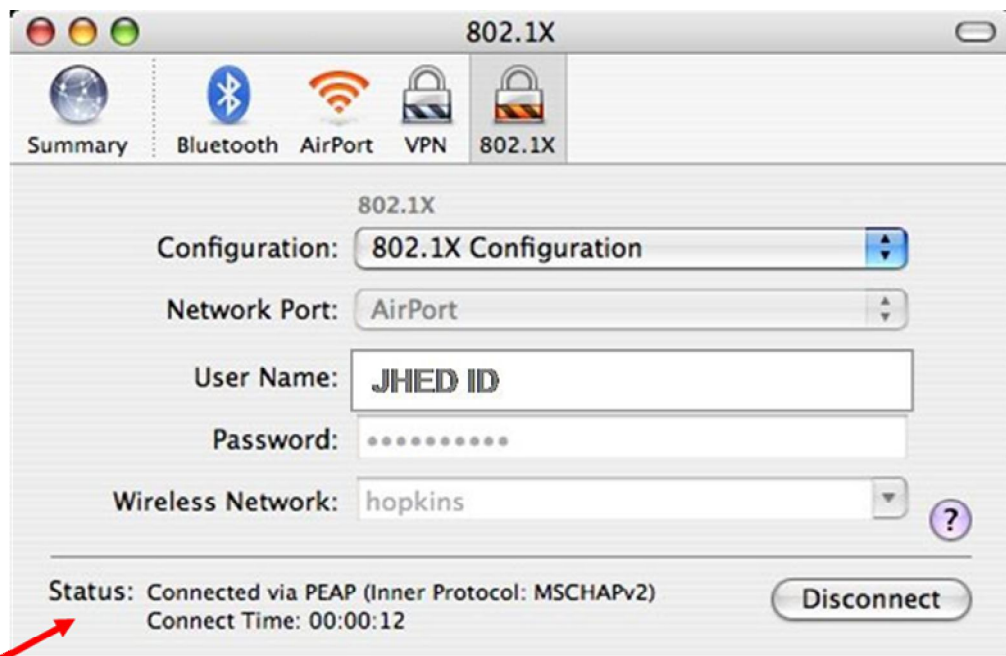
Wireless @ Johns Hopkins

Step 8: A pop-up window will appear asking for your **JHED ID** and **Password**.



The image shows a dialog box titled "802.1X Authentication" with a purple globe icon. It contains two input fields: "User Name:" with the text "JHED ID" and "Password:" with a masked password of seven dots. At the bottom are "Cancel" and "OK" buttons.

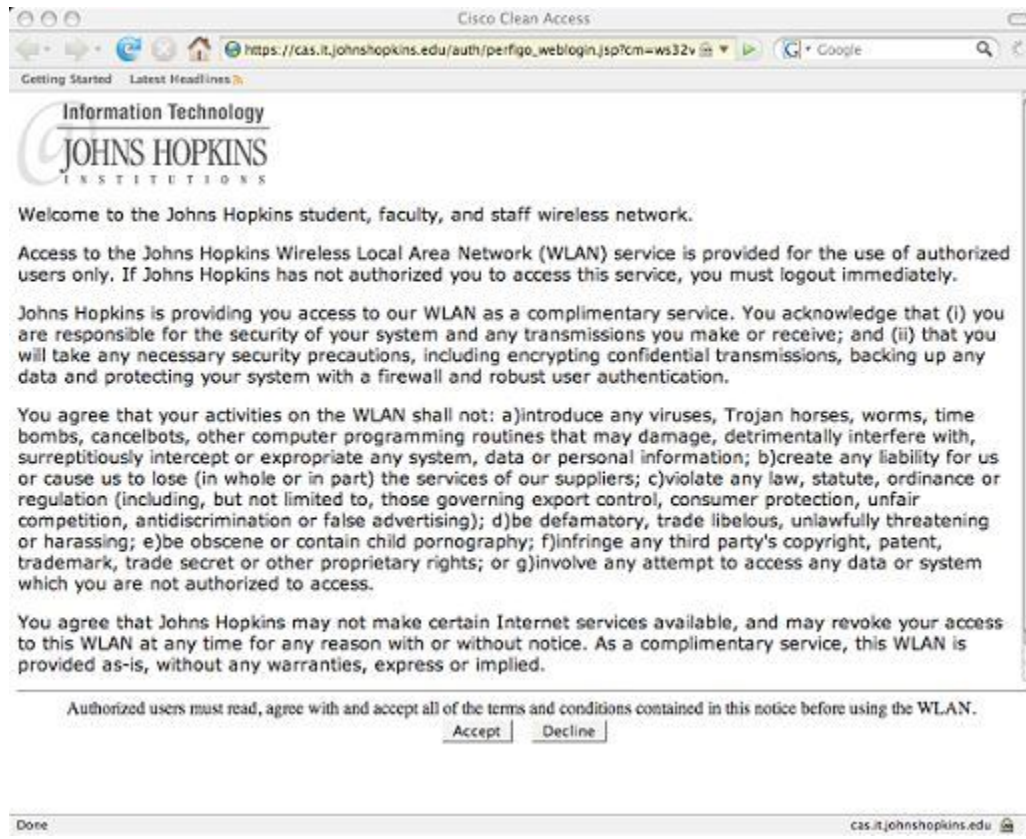
Step 9: You can verify connectivity by opening **Internet Connect** and checking your **802.1X** status.



The image shows the "802.1X" configuration window in a system menu. The window has tabs for "Summary", "Bluetooth", "AirPort", "VPN", and "802.1X". The "802.1X" tab is selected. The configuration includes: "Configuration:" set to "802.1X Configuration", "Network Port:" set to "AirPort", "User Name:" set to "JHED ID", "Password:" masked with seven dots, and "Wireless Network:" set to "hopkins". At the bottom, the "Status:" is "Connected via PEAP (Inner Protocol: MSCHAPv2)" with a "Connect Time: 00:00:12" and a "Disconnect" button. A red arrow points to the status text.

Wireless @ Johns Hopkins

Step 10: Open a web browser and you should be redirected to the Network Agreement Page. Please click **Accept**, if you agree to the terms.



You are now on the network!

Where do I get additional help?

Homewood Campus:

Technical Assistance

Garland Hall Basement
Hours M-F 8AM – 5PM

Krieger Computer Lab

Krieger Hall Room 160
Hours Sunday 10AM through Friday
10PM, Saturday 10AM – 10PM

Contact the Support Center at:

(410) 955-HELP [(410) 955-4357] Johns Hopkins East Baltimore
(410) 516-HELP [(410) 516-4357] Johns Hopkins Homewood Campus
(443) 997-HELP [(443) 997-4357] Johns Hopkins Mount Washington

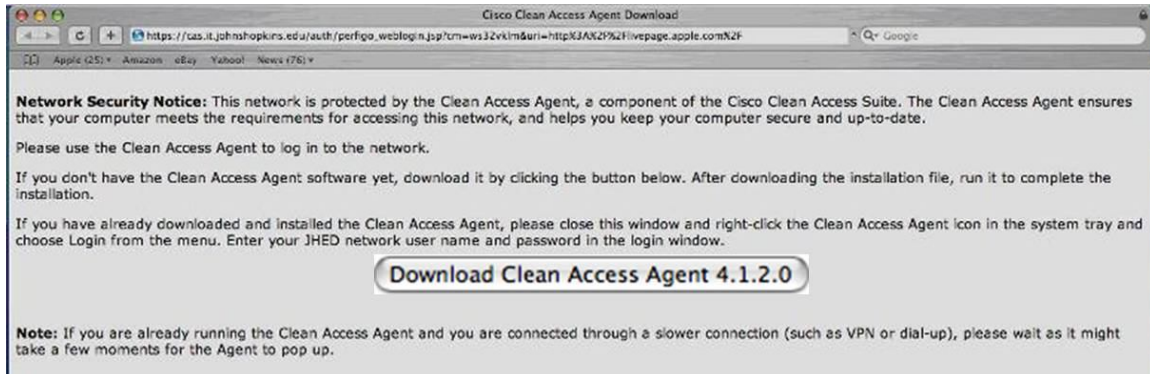
Wireless @ Johns Hopkins

Installing the Clean Access Agent:

*****NOTE:**

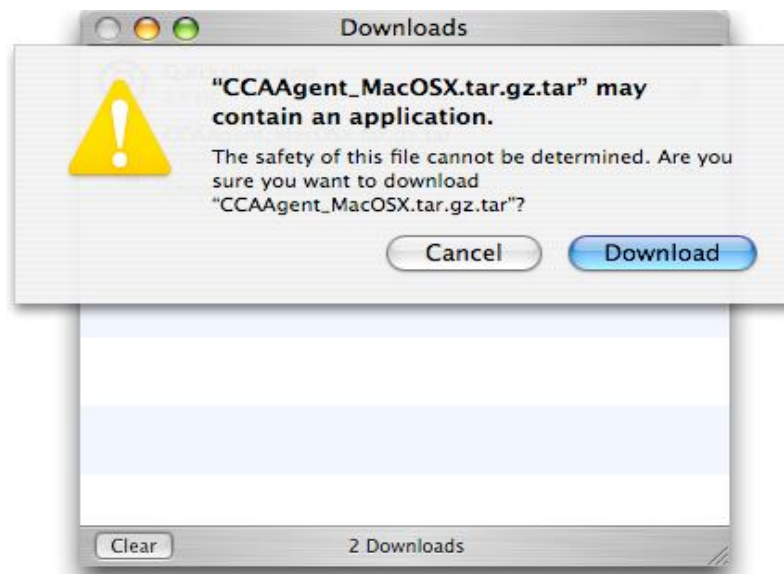
THIS REQUIREMENT IS TEMPORARILY DISABLED

Step 1: Go to your browser, usually Safari. Click on the **Download Clean Access Agent** button.



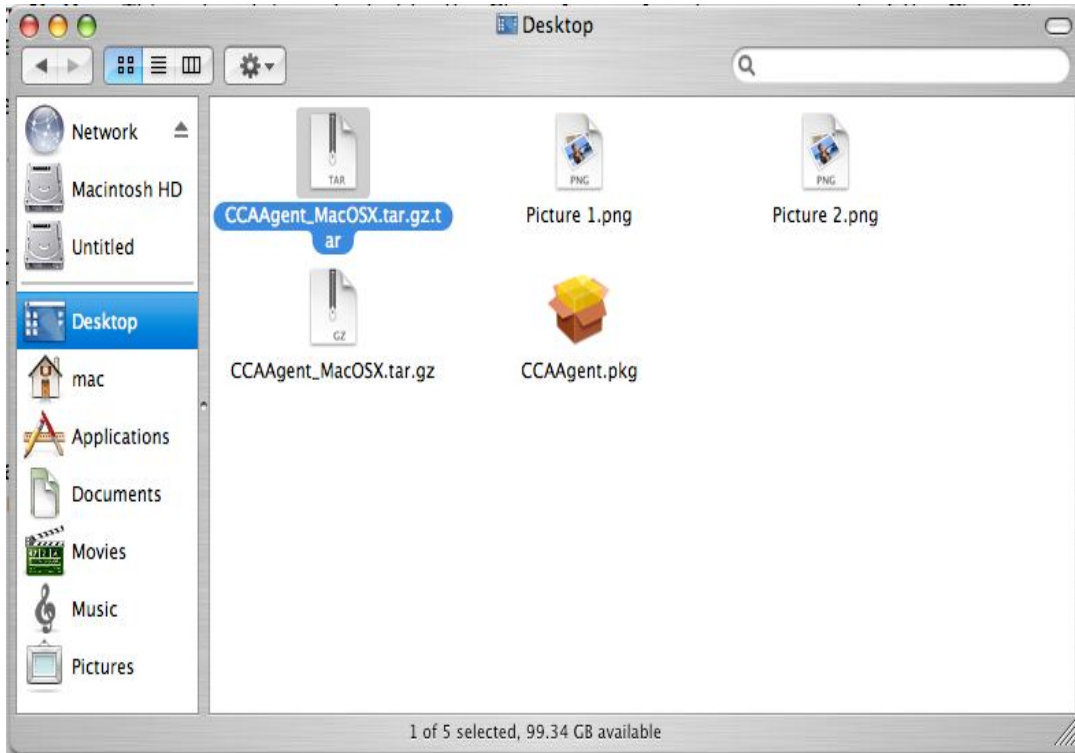
The Clean Access Agent is required on MAC machines. It is only used for authentication at the moment, but it's the foundation of protecting Macintosh users. There is no need to log into the web login page every time you want to get online. The agent will pop up when it connects.

Step 2: Download and expand the file.

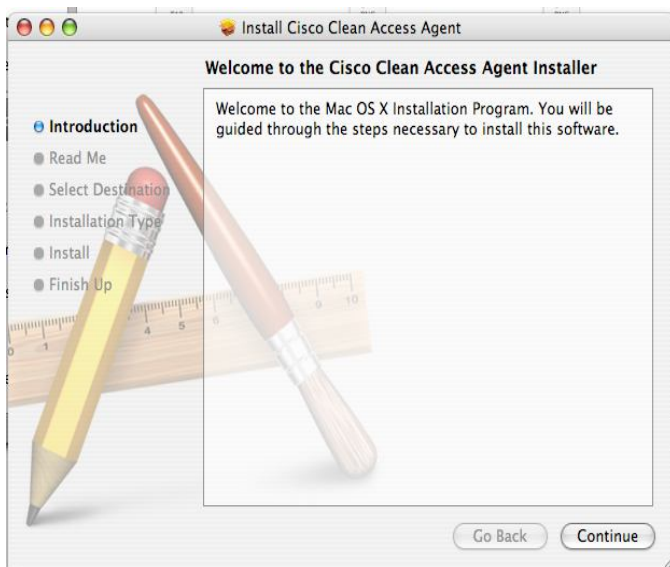


Wireless @ Johns Hopkins

Step 3: Click on **CCA_MacOSX.tar.gz** to unpack the compressed file. Click on **CCAAgent_MacOSX.tar** to unpack the install package. Click on **CCAAgent.pkg** to install the agent package.



Step 4: Click **Continue**.

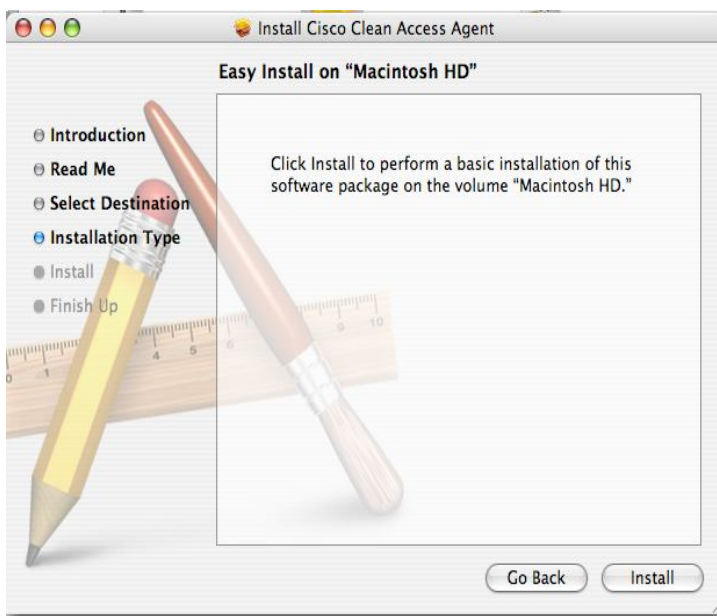


Wireless @ Johns Hopkins

Step 5: Click Continue.



Step 6: Click Install.

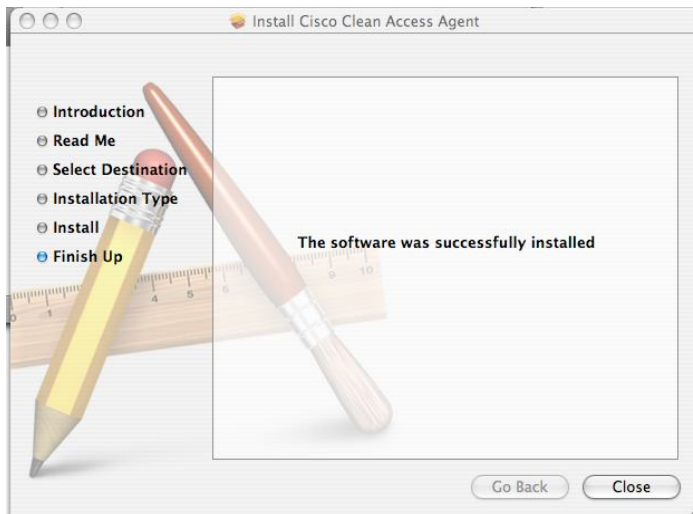


Wireless @ Johns Hopkins

Step 7: Enter your MAC OS X userid and password.



Step 8: The agent will report that it has successfully installed. Click **Close**.



Step 9: After approximately 5 seconds, the agent will log you in.



Wireless @ Johns Hopkins

Step 10: Now, the agent will run automatically every time you log in. An Icon will now appear on your menu bar.



Where do I get additional help?

Homewood Campus:

Technical Assistance

Garland Hall Basement
Hours M-F 8AM – 5PM

Krieger Computer Lab

Krieger Hall Room 160
Hours Sunday 10AM through Friday
10PM, Saturday 10AM – 10PM

Contact the Support Center at:

(410) 955-HELP [(410) 955-4357] Johns Hopkins East Baltimore
(410) 516-HELP [(410) 516-4357] Johns Hopkins Homewood Campus
(443) 997-HELP [(443) 997-4357] Johns Hopkins Mount Washington