

Wireless @ Johns Hopkins

Wireless Install Guide:

Apple Macintosh OS X 10.5.X "LEOPARD"

NOTE: Users familiar with OS X Tiger will notice that the **Internet Connect** utility has been replaced with **Network Preferences**.

Additional Hopkins Wireless Network Instructions and Requirements for Mac OS X Tiger, Windows Vista and Windows XP can be found at:

<http://www.it.jhu.edu/networking/wireless/>

The Johns Hopkins Institutions offer the “**hopkins**” wireless network to faculty, staff, students, or anyone with a valid JHED ID. The “hopkins” wireless network uses strong 256 bit Advanced Encryption Standard (AES), and Microsoft Internet Authentication Service (IAS) for authentication to provide a higher level of security and access. A program named Cisco Clean Access Agent will be resident to accommodate a behind the scenes handshake.

****NOTE: The Clean Access Agent requirement has been temporarily disabled.**

How do I find out my JHED account information?

The following steps will allow you to activate your JHED ID. You will need access to a wired (ethernet) connection.

Step 1: Open a web browser and go to <http://my.johnshopkins.edu>.

Step 2: Click the **First Time Logon** tab.

Step 3: Follow the instructions on the login page to find out your Login ID and to set your password.

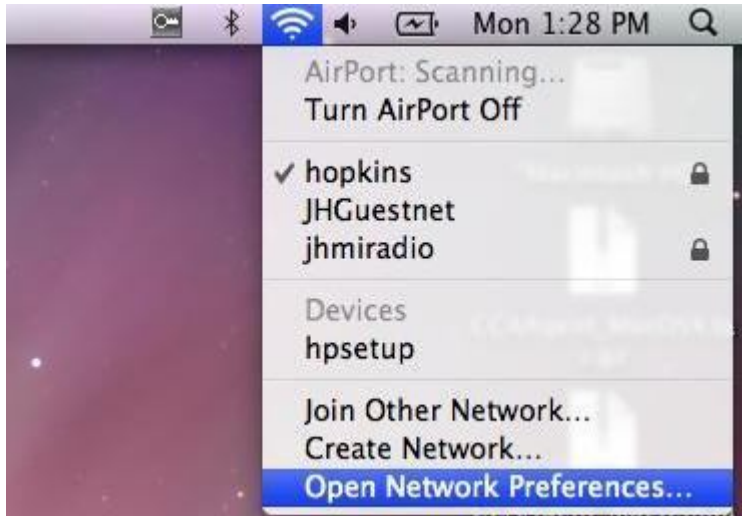
Step 4: Click on **Change My Info** tab and fill in a valid email address. Click **Save**.

JHED account and Active Directory credentials should be the same except for some grandfathered accounts. If you have issues with signing in when asked for your User ID and password, please contact the Help Desk, (410) 955-HELP, to correct the issue.

Wireless @ Johns Hopkins

How to configure “hopkins” for Macintosh OS X 10.5.x

Step 1: Go to the **Airport** menu and choose **Open Network Preferences**.

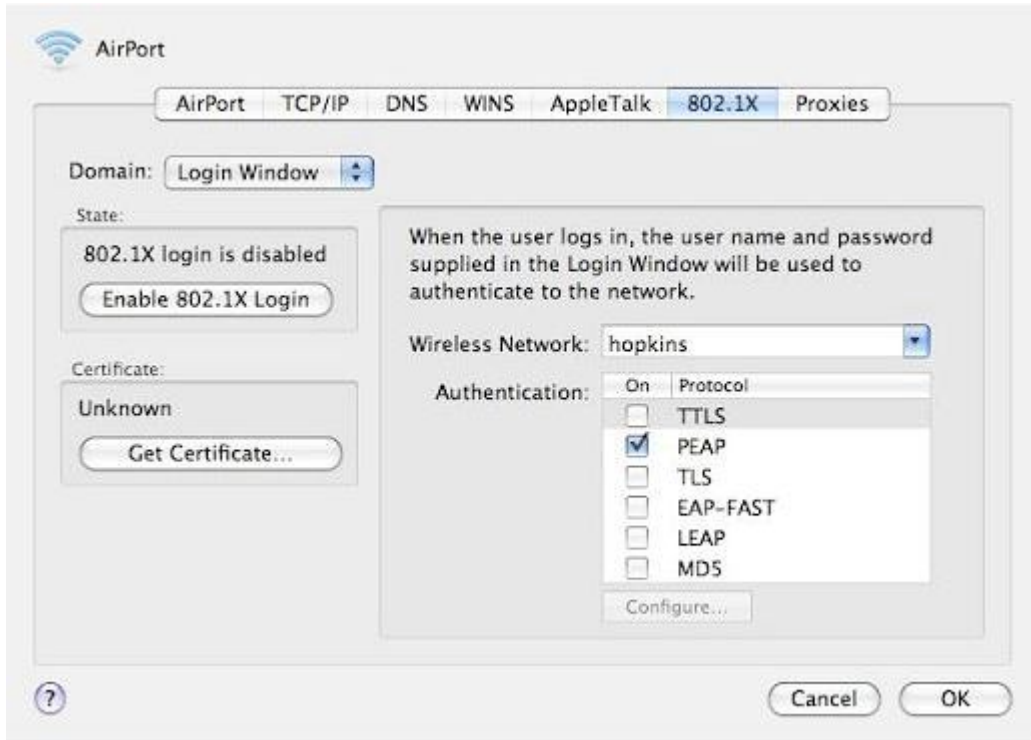


Step 2: Make sure **Airport** is selected and click on **Advanced**.



Wireless @ Johns Hopkins

Step 3: Select the **802.1X** tab on the top line. For the **Wireless Network** type **hopkins**. For **Authentication**, make sure ONLY **PEAP** is selected. Click **OK**.



Step 4: Click on **Airport** Icon and select '**hopkins**' network.



Wireless @ Johns Hopkins

Step 5: You will be prompted to accept our certificate. Click on **Show Certificate**.



Step 6: You must trust this certificate. Click on the arrow beside the certificate **Trust** settings to expand the option. When using this certificate select **Always Trust**.



NOTE: You will be prompted for your Mac OS X username and password. Then click **Continue**.

Wireless @ Johns Hopkins

Step 7: Enter your **JHED ID** and **password**.



The image shows a dialog box titled "802.1X Authentication" with a purple globe icon. It contains two input fields: "User Name:" with the text "JHED ID" and "Password:" with a masked password of seven dots. At the bottom are "Cancel" and "OK" buttons.

Step 8: Verify that the 'hopkins' network appears only **ONE** time.



The image shows the "Network" system preferences window, specifically the "AirPort" tab. The "Preferred Networks:" list contains two entries:

| Network Name | Security |
|--------------|----------------|
| hopkins | WPA Enterprise |
| JHGuestnet | None |

Below the list are controls for adding, removing, and editing networks, and three checkboxes: "Remember any network this computer has joined" (checked), "Disconnect from wireless networks when logging out" (checked), and "Require Administrator password to control AirPort" (unchecked). The "AirPort ID:" is shown as "00:1c:b3:b9:2b:1c". "Cancel" and "OK" buttons are at the bottom right.

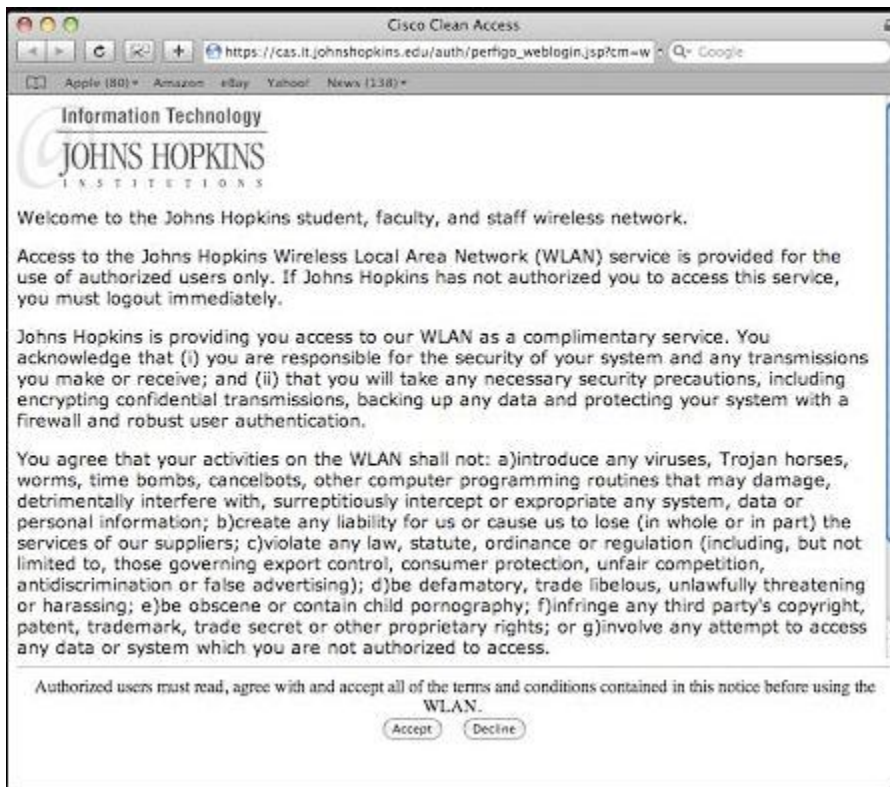
Wireless @ Johns Hopkins

Step 9: Verify the **Status** of the connection. You can also click the **Lock** icon to prevent further changes.



Wireless @ Johns Hopkins

Step 10: Please open a web browser. You will be redirected to the Network Agreement page. Click **Accept**, if you agree to the terms.



You are now on the network!

Where do I get additional help?

Homewood Campus:

Technical Assistance

Garland Hall Basement
Hours M-F 8AM – 5PM

Krieger Computer Lab

Krieger Hall Room 160
Hours Sunday 10AM through Friday
10PM, Saturday 10AM – 10PM

Contact the Support Center at:

(410) 955-HELP [(410) 955-4357] Johns Hopkins East Baltimore
(410) 516-HELP [(410) 516-4357] Johns Hopkins Homewood Campus
(443) 997-HELP [(443) 997-4357] Johns Hopkins Mount Washington

Installing the Clean Access Agent:

*****NOTE:**

THIS REQUIREMENT IS TEMPORARILY DISABLED

Step 1: Go to your browser, usually Safari. Click on the **Download Clean Access Agent** button.



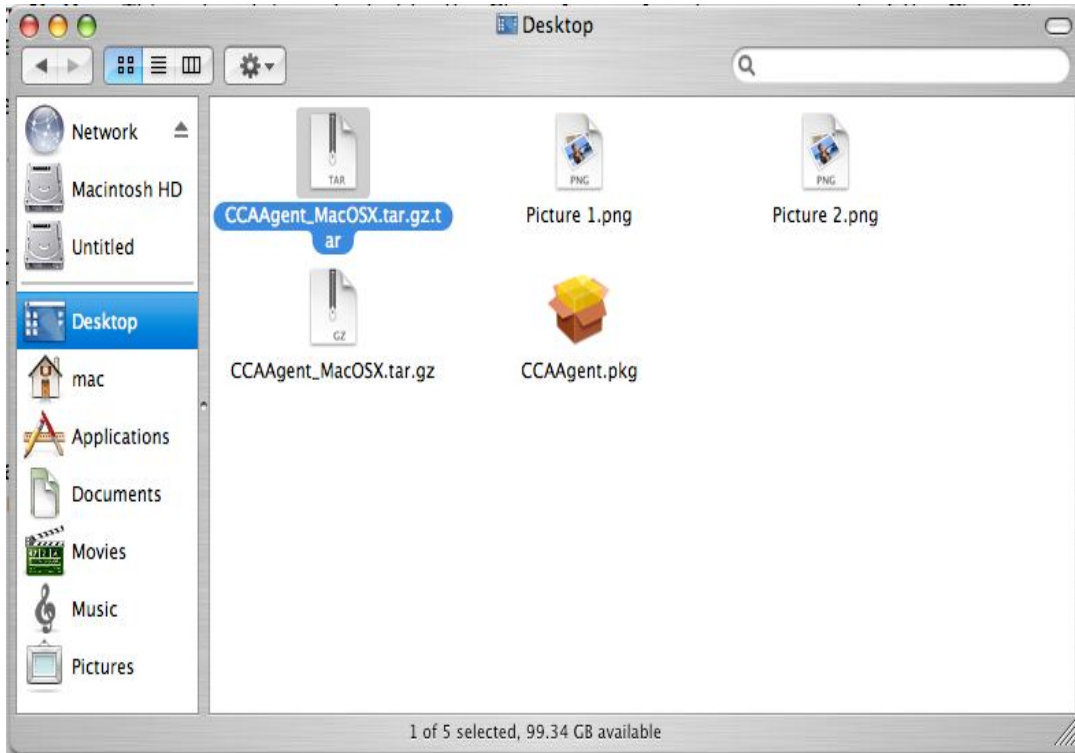
The Clean Access Agent is required on MAC machines. It is only used for authentication at the moment, but it's the foundation of protecting Macintosh users. There is no need to log into the web login page every time you want to get online. The agent will pop up when it connects.

Step 2: Download and expand the file.

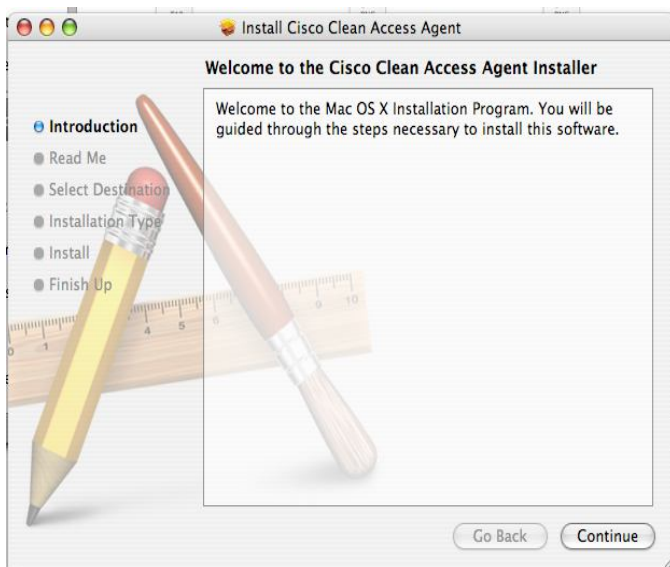


Wireless @ Johns Hopkins

Step 3: Click on **CCA_MacOSX.tar.gz** to unpack the compressed file. Click on **CCAAgent_MacOSX.tar** to unpack the install package. Click on **CCAAgent.pkg** to install the agent package.



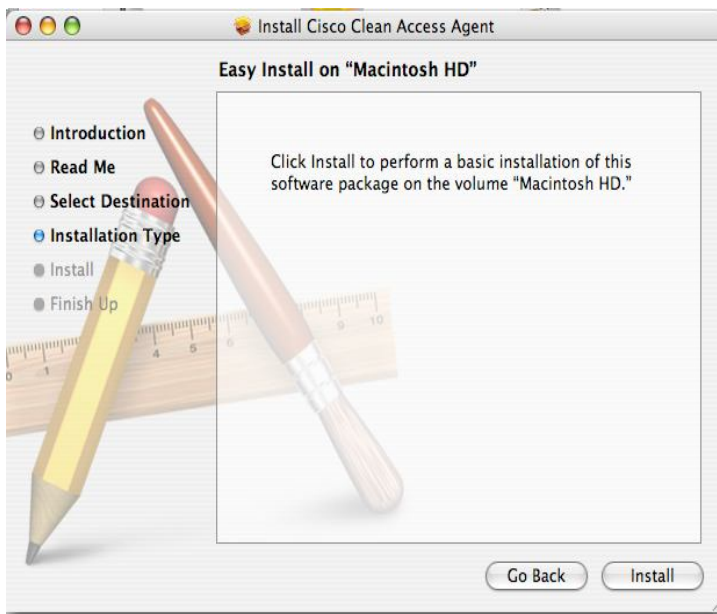
Step 4: Click **Continue**.



Step 5: Click **Continue**.



Step 6: Click **Install**.

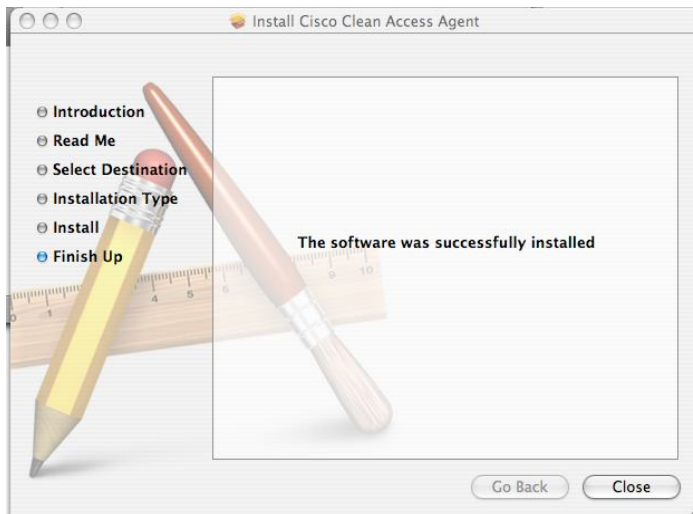


Wireless @ Johns Hopkins

Step 7: Enter your **MAC OS X userid** and **password**.



Step 8: The agent will report that it has successfully installed. Click **Close**.



Step 9: After approximately 5 seconds, the agent will log you in.



Wireless @ Johns Hopkins

Step 10: Now, the agent will run automatically every time you log in. An Icon will now appear on your menu bar.



Where do I get additional help?

Homewood Campus:

Technical Assistance

Garland Hall Basement
Hours M-F 8AM – 5PM

Krieger Computer Lab

Krieger Hall Room 160
Hours Sunday 10AM through Friday
10PM, Saturday 10AM – 10PM

Contact the Support Center at:

(410) 955-HELP [(410) 955-4357] Johns Hopkins East Baltimore
(410) 516-HELP [(410) 516-4357] Johns Hopkins Homewood Campus
(443) 997-HELP [(443) 997-4357] Johns Hopkins Mount Washington